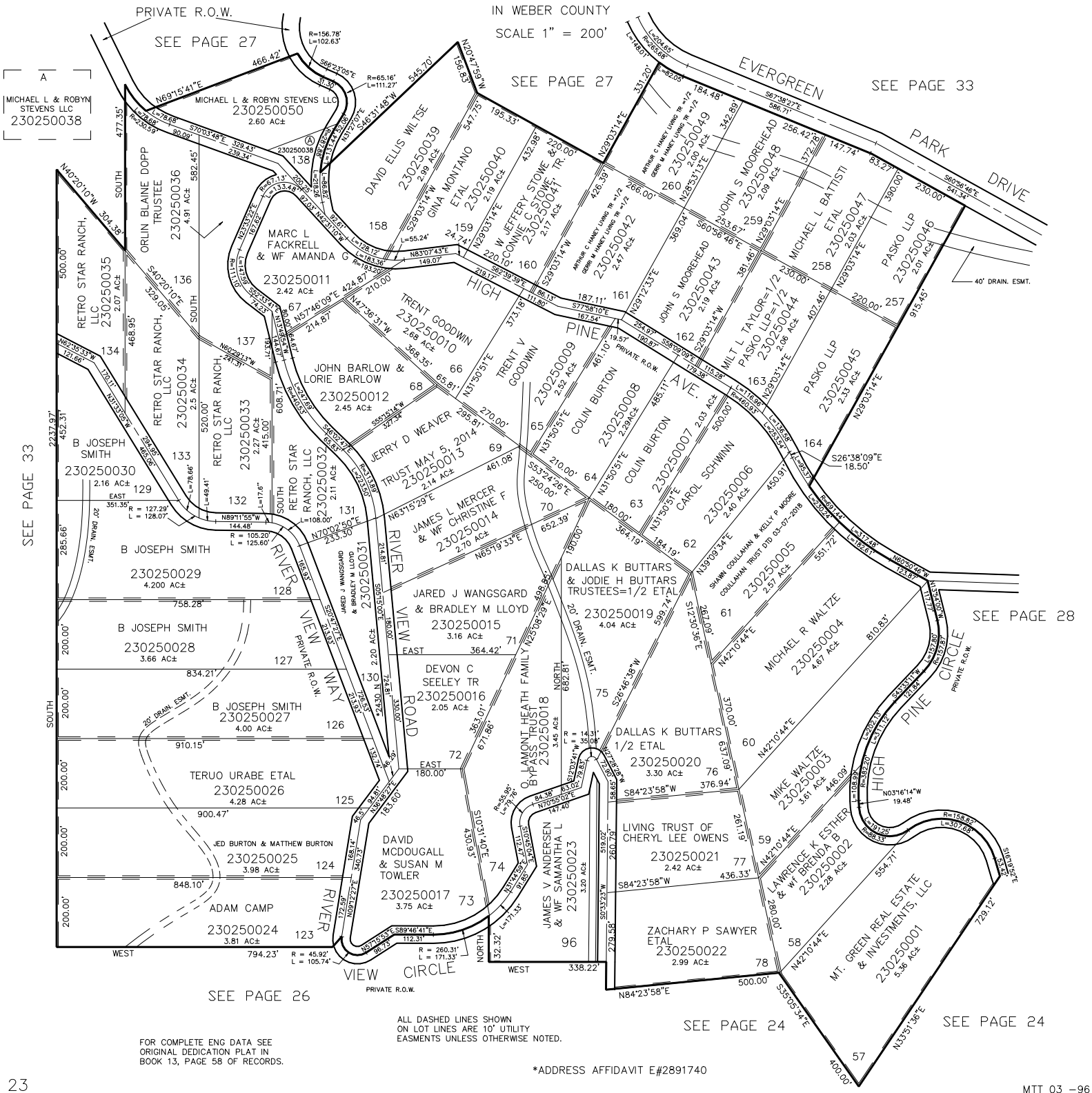


PART OF SEC. 31-32, T.7N., R.3E., S.L.B. & M.  
EVERGREEN PARK SUBDIVISION NO. 1

TAXING UNIT: 520

IN WEBER COUNTY  
SCALE 1" = 200'



A  
MICHAEL L. & ROBYN  
STEVENS LLC  
230250038

SEE PAGE 33

23

FOR COMPLETE ENG DATA SEE ORIGINAL DEDICATION PLAT IN BOOK 13, PAGE 58 OF RECORDS.

ALL DASHED LINES SHOWN ON LOT LINES ARE 10' UTILITY EASEMENTS UNLESS OTHERWISE NOTED.

\*ADDRESS AFFIDAVIT E#2891740

SEE PAGE 24

SEE PAGE 24